



P
Permit
holders
parking only
past this point
Mon - Fri
8 am - 6 pm

P
Permit
holders
parking only
past this point
Mon - Fri
8 am - 6 pm

HUNTERS[®]
HERE TO GET *you* THERE

 4  2  null  D

Winchester Road, Southampton

Per Calendar Month £2,500 Per Calendar Month

HUNTERS[®]

HERE TO GET *you* THERE

This attractive four-bedroom home is situated in an established and affluent residential area of Southampton, conveniently positioned close to the M3 with direct routes to Winchester, Portsmouth, and surrounding areas. The location is well served by public transport, offering easy access to the city centre, and is surrounded by local parks and green spaces.

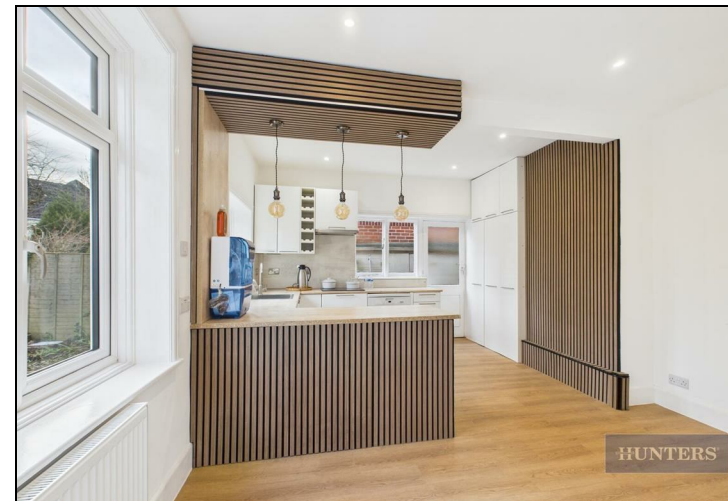
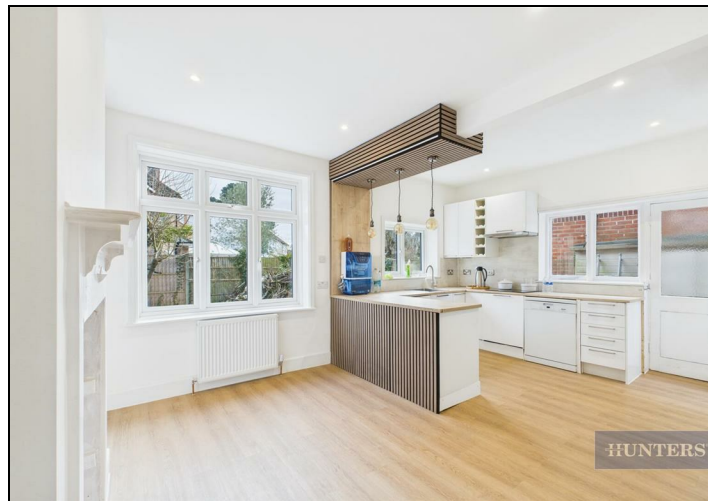
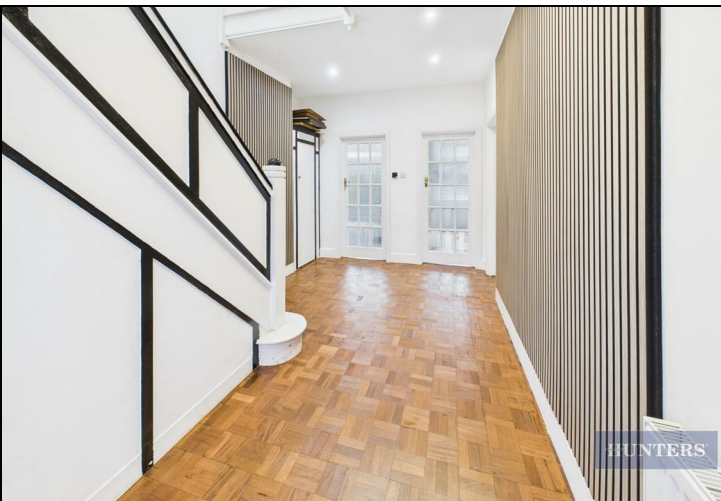
The first floor offers four generously sized double bedrooms, including a principal bedroom with the benefit of an en suite bathroom. A modern and well-presented family bathroom serves the remaining bedrooms.

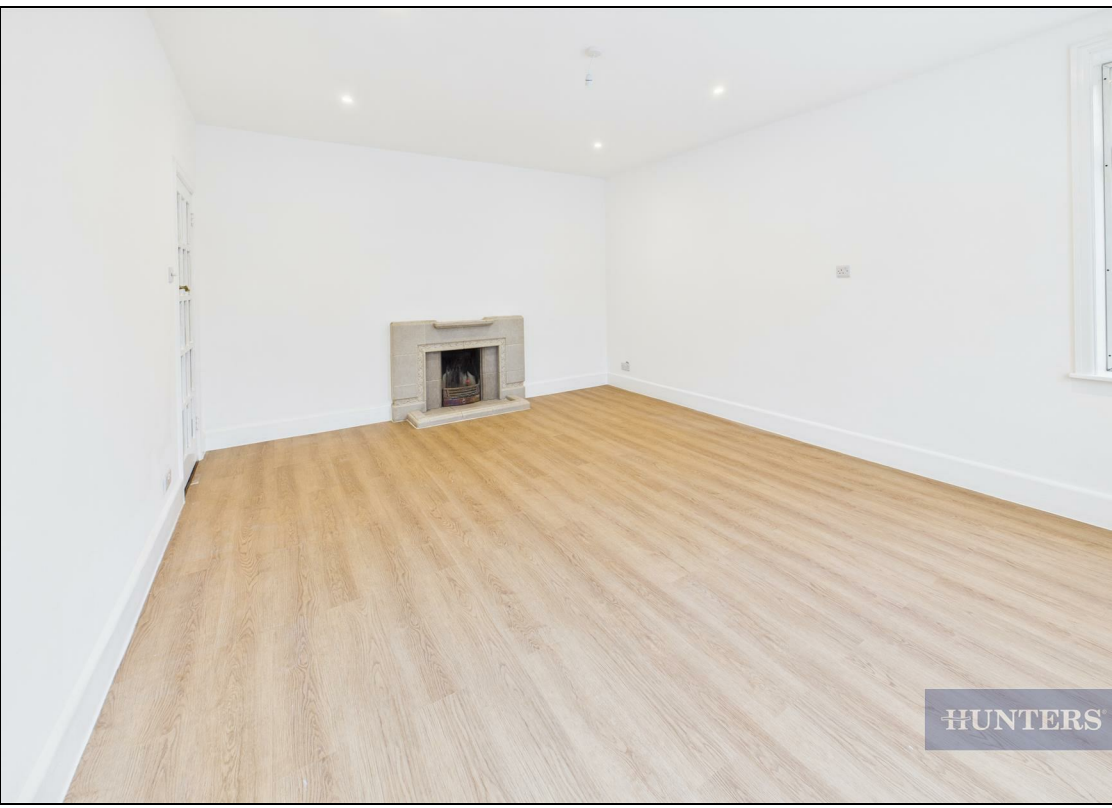
Internally, the property presents a thoughtful blend of modern living and period character. Contemporary features and finishes have been carefully incorporated throughout, while retaining the charm and elegance associated with Victorian design. The result is a well-balanced home that feels both current and timeless.

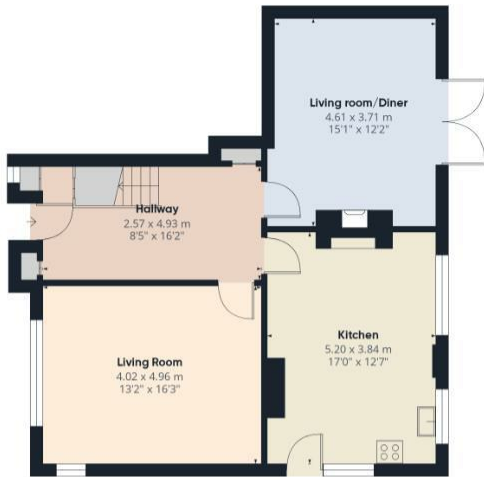


KEY FEATURES

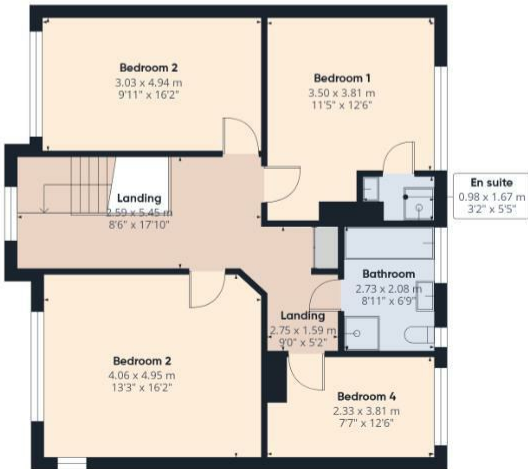
- Modern four bedroom house
 - Garage parking
 - Large bedrooms
- Ensuite situated in master bedroom
- Stylish kitchen with beautiful peninsula
 - Large full bathroom
 - Spacious living area
 - Local amenities
 - Direct transport links







Ground Floor



Floor 1

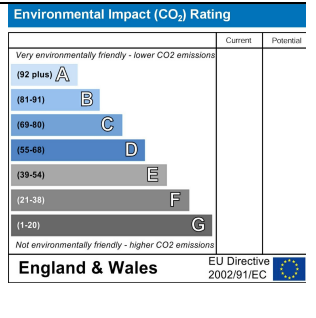
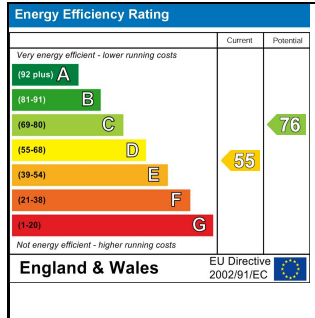
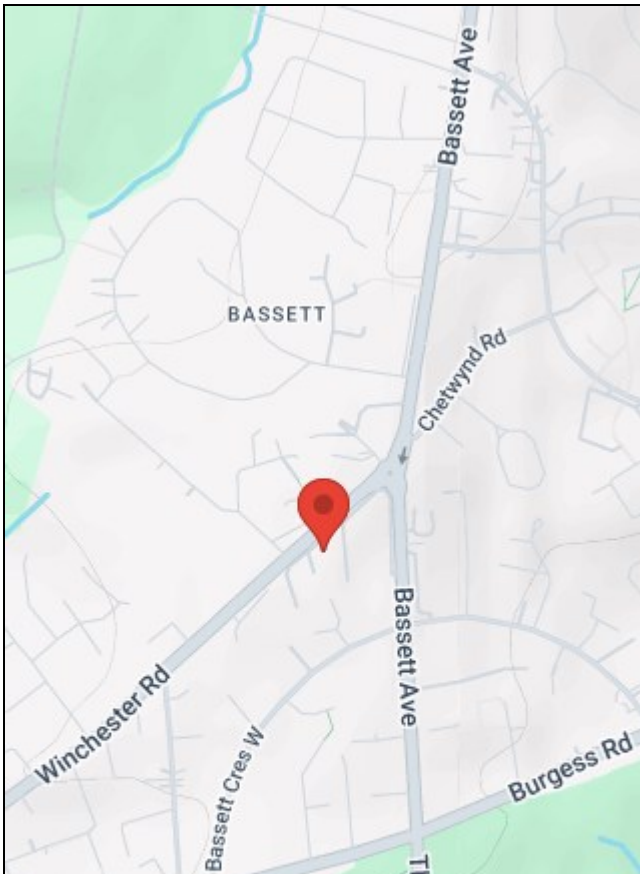


Approximate total area⁽¹⁾
153.4 m²
1651 ft²

(1) Excluding balconies and terraces

Calculations reference the RICS IPMS 3C standard. Measurements are approximate and not to scale. This floor plan is intended for illustration only.

GIRAFFE360



38 Bedford Place, Southampton, Hampshire, SO15 2DG | 02380 987 720
southampton@hunters.com | www.hunters.com



This Hunters business is independently owned and operated by Clegg Properties Ltd | Registered Address 27 Westfield Road, Lymington, Hampshire, England, SO41 3PZ | Registered Number: 06421594 England and Wales | VAT No: 188 0548 76 with the written consent of Hunters Franchising Limited.